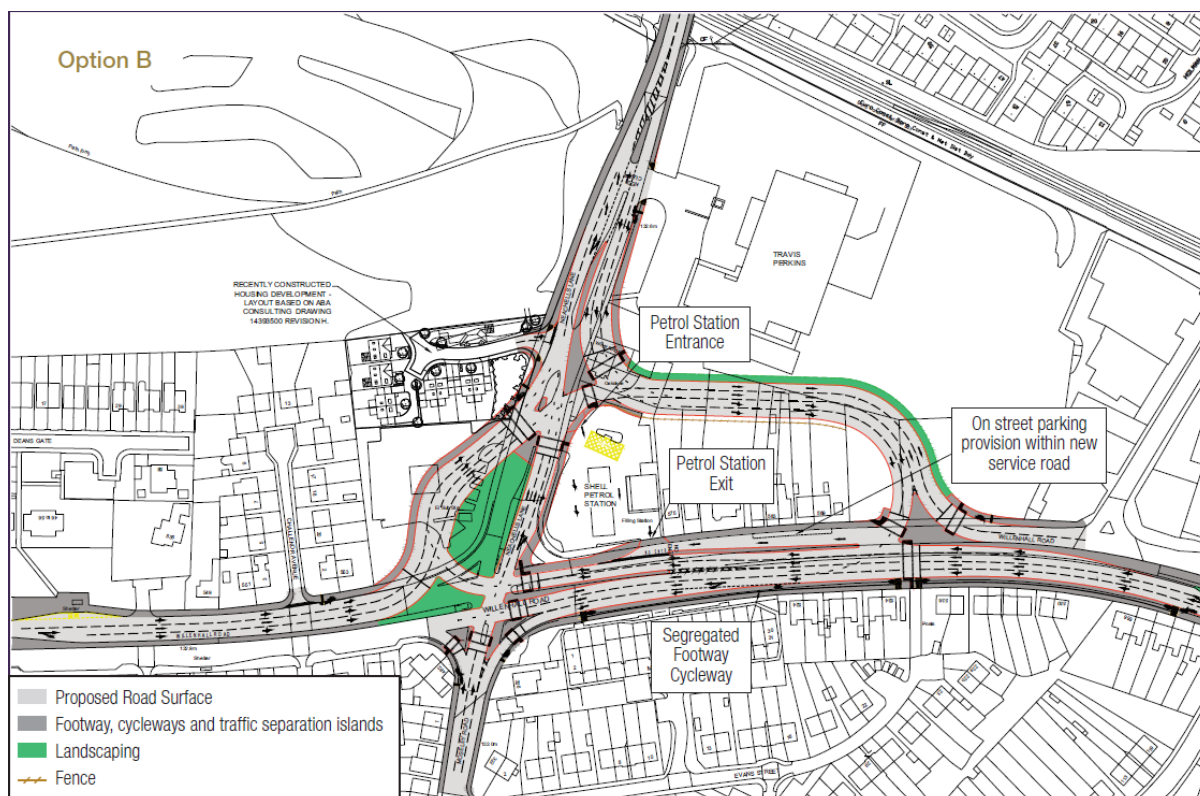


Option B



Option B is a more complex improvement that facilitates all the necessary traffic movements.

It proposes the creation of signalised roundabout running clockwise around the northern side of the petrol station and residential units, connecting back onto Willenhall Road (E) to west of Noose Lane.

A connecting road running through the roundabout will be retained to allow for northbound movements from Moseley Road, providing extra stacking capacity and access to the petrol station. The roundabout creates extra capacity for traffic as it takes most of the traffic away from the existing cross-road junction.

Option B has a greater capacity than Option A so the benefits will be felt over a longer period of time, but at a higher initial cost.

Advantages

- Increase junction capacity
- Mitigates capacity issues for Moseley
- Longer term positive benefits
- Improves potential for investment in area because of the longer-term benefits
- Reduced traffic queues and improved air quality around the junction
- Improved multi-modal transport opportunities

Disadvantages

- Greater impact on residential amenity
- Increase in distance travelled for some journeys
- More significant land take
- Higher scheme cost