

Bilston Health & Wellbeing Facility

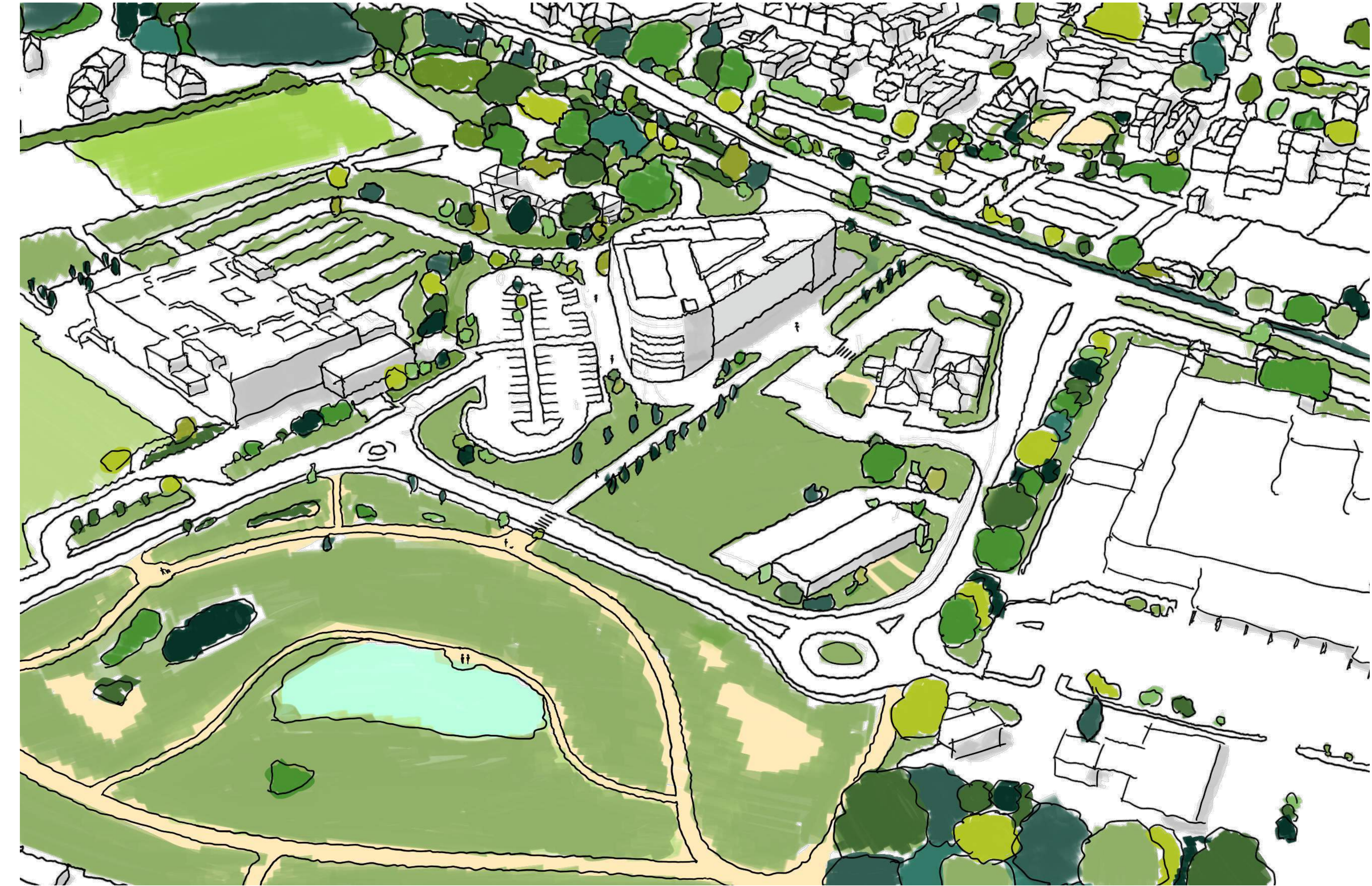
Project Proposal

The City of Wolverhampton Council is seeking feedback for the design of an integrated Health & Wellbeing Facility in the heart of the Bilston community, adjacent to the landmark WV Active Bilston - Bert Williams Leisure Centre. Initial site analysis identified two suitable site locations: Option 1: The WV Active Bilston - Bert Williams car park, and Option 2: The Bilston Urban Village Medical Centre.

An iterative design development approach, based on stakeholder feedback, resulted in initial concept design ideas for the new Bilston Health & Wellbeing Facility. The concept designs were presented to the Bilston community during the Community Event in early spring. Following feedback from this event, coupled with site surveys and assessments, Option 2 was identified as the preferred location for the facility. The developed scheme in this location is presented on these storyboards for stakeholder and community feedback.

The feedback received will inform ongoing design development and help shape the scheme prior to submission of an outline planning application later this year.

The Bilston Health & Wellbeing Facility will be an anchor within the community, bringing care close to people's homes. The new facility will integrate and transform primary and community health and social care services.



Key Aspirations

- Focus on the health and wellbeing of the community
- Holistic integration of health and social care
- Creation of an open, transparent, and inclusive space
- Involvement of the community in the design journey
- Promotion of flexible working environments
- Implementation of sustainable design methods
- Creation of a safe environment for all
- Improved accessibility to health and social care services



Bert Williams Leisure Centre - Car Park



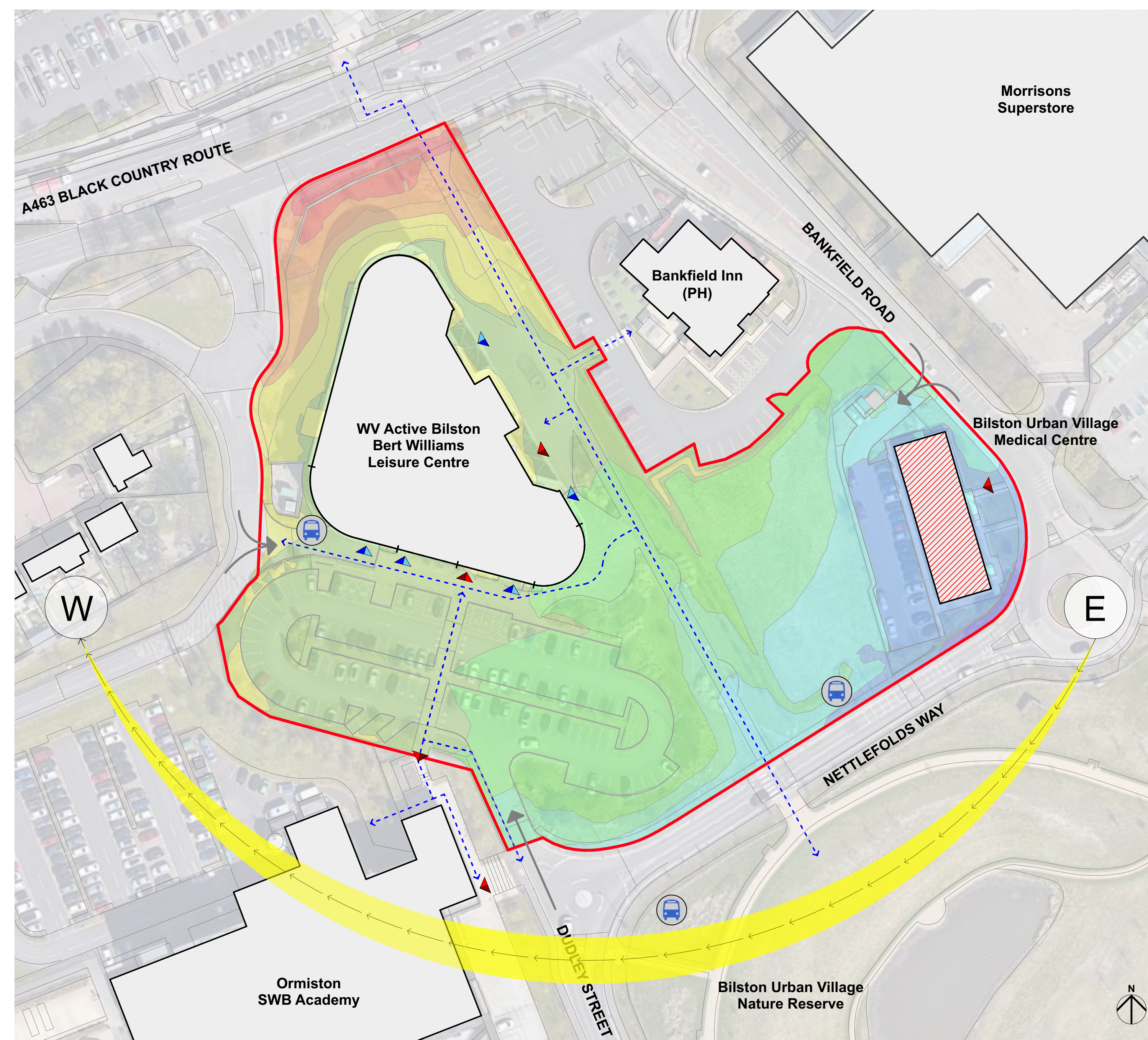
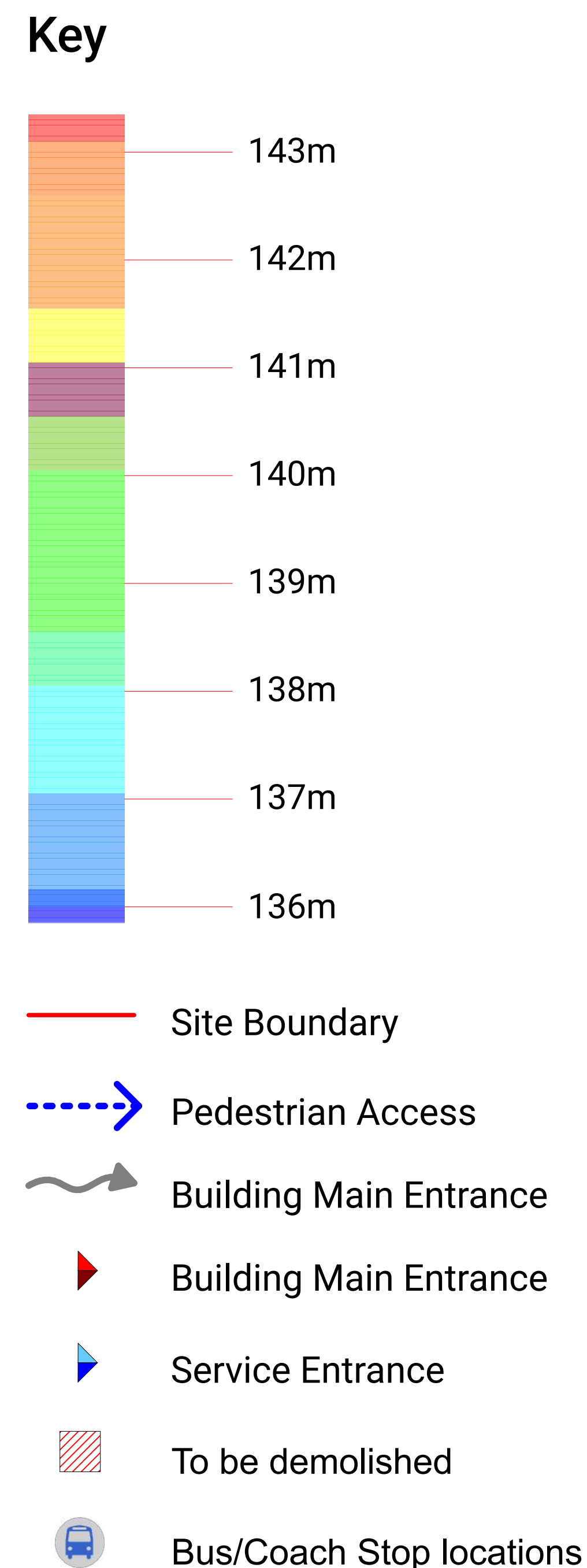
Bert Turner Boulevard



Bilston Urban Village Medical Centre - Car Park

Bilston Health & Wellbeing Facility

Community Event, Bilston Outdoor Market - Early Spring 2023



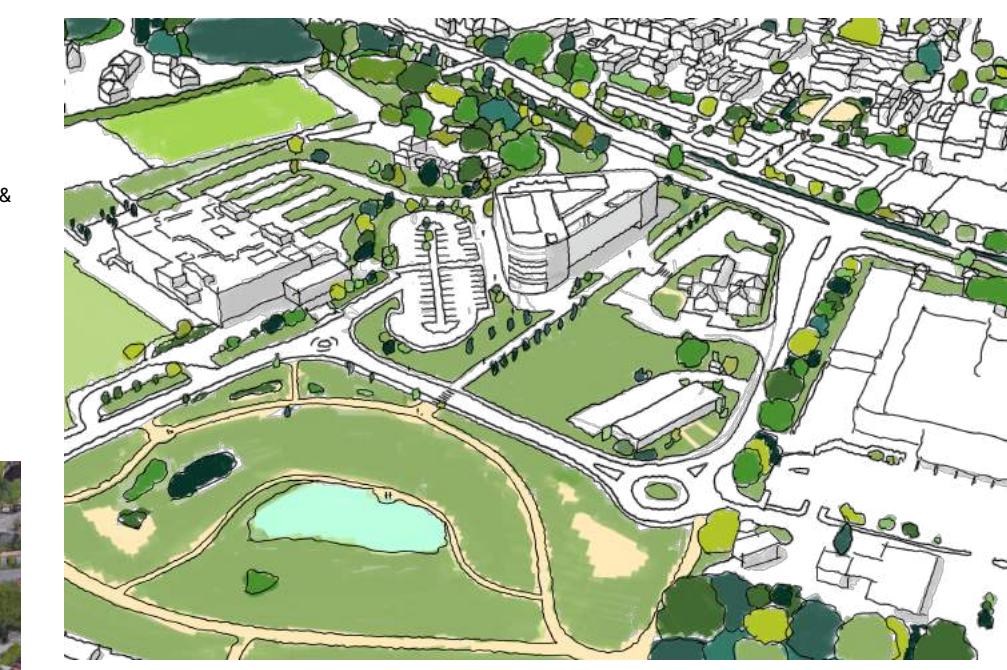
Bilston Health & Wellbeing Facility

Project Proposal
The City of Wolverhampton Council is seeking feedback for the design of an integrated Health & Wellbeing Facility in the heart of the Bilston community adjacent to the landmark WV Active Bilston - Bert Williams Leisure Centre. The initial site analysis identified two suitable site locations: 1. The WV Active Bilston - Bert Williams car park, and 2. The Bilston Urban Village Medical Centre.

An iterative design development approach resulted in initial concept design ideas for the new Bilston Health & Wellbeing Facility, which are presented on these boards for review by the community of Bilston.

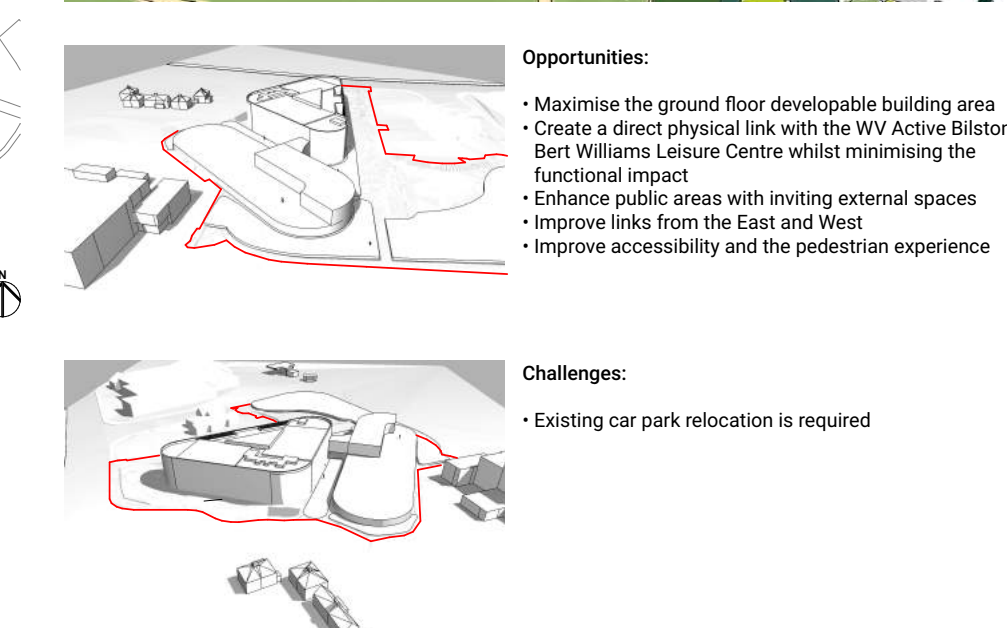
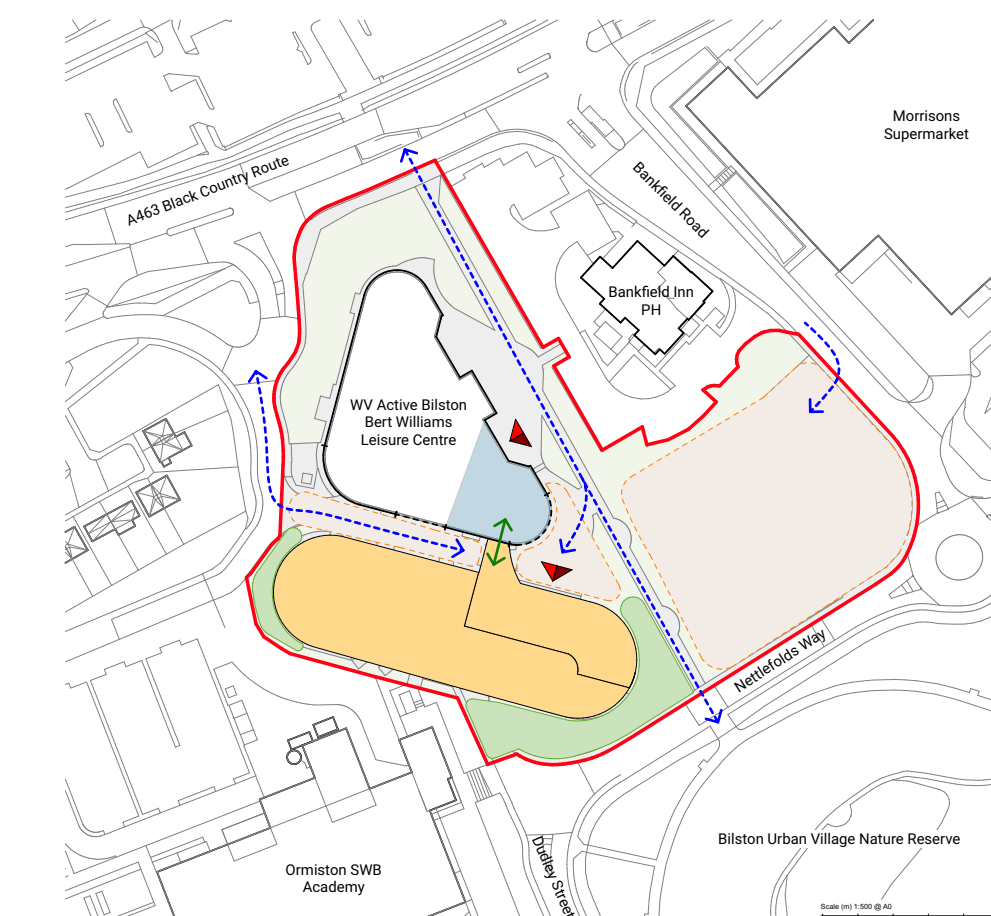
The feedback received will inform ongoing design development and help to shape the scheme. Further Community and Stakeholder Engagements will continue, prior to submitting an outline Planning application later this year.

The facility has the potential to make a positive impact on the city-wide economy, create new employment opportunities, and bring access to integrated health and social care services.



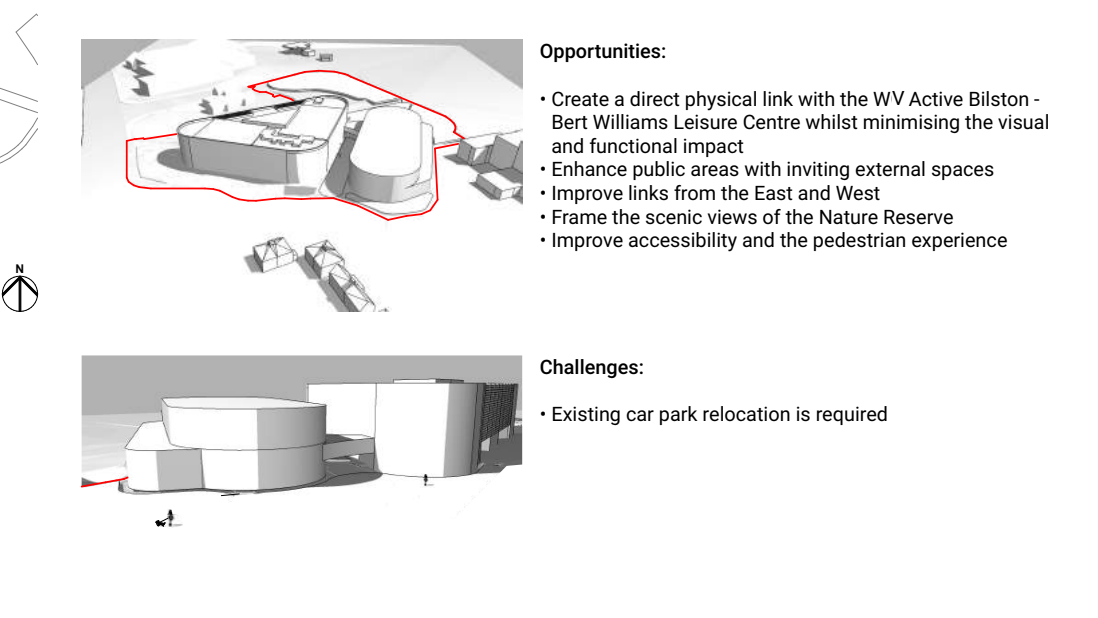
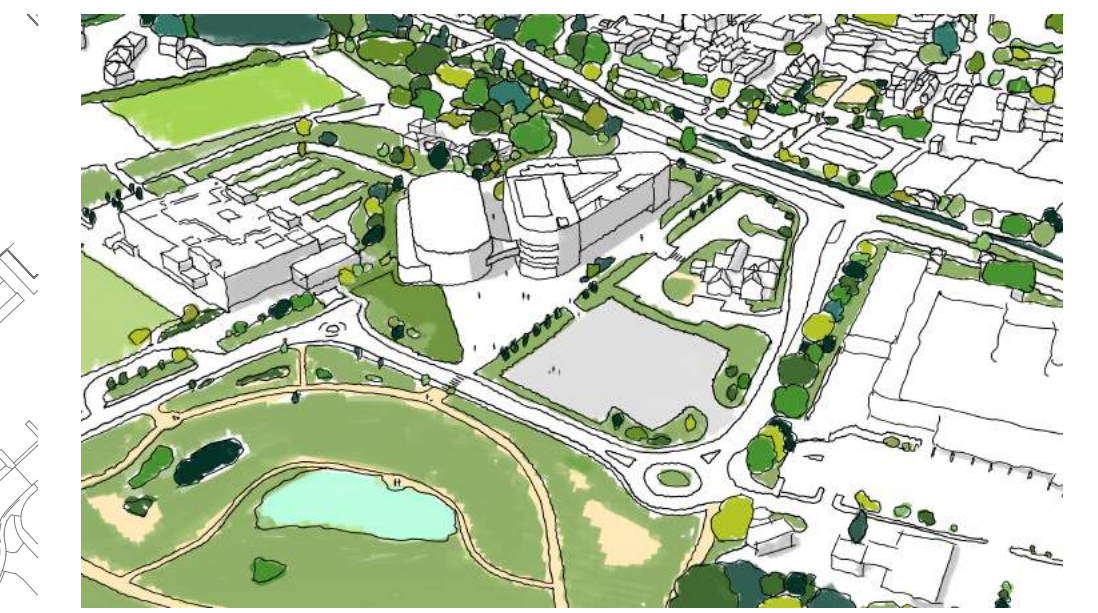
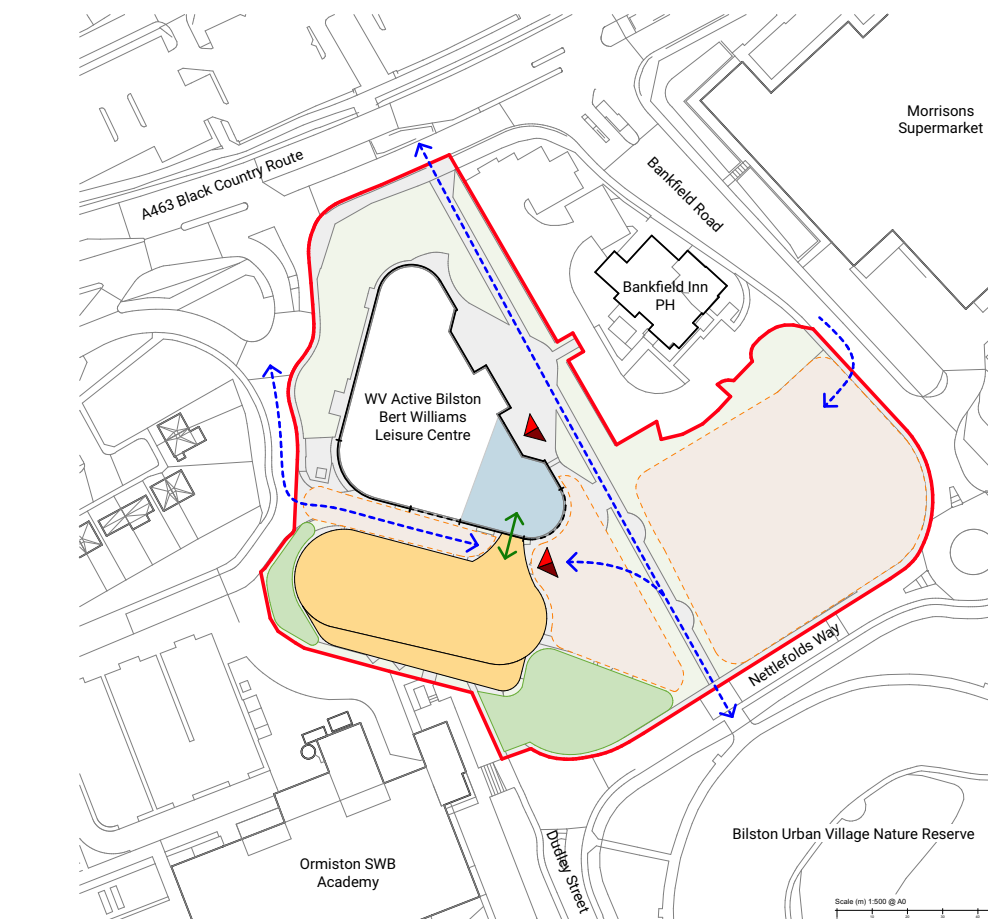
Bilston Health & Wellbeing Facility

Concept B: Single-Storey Extension with First Floor Bridge Connection



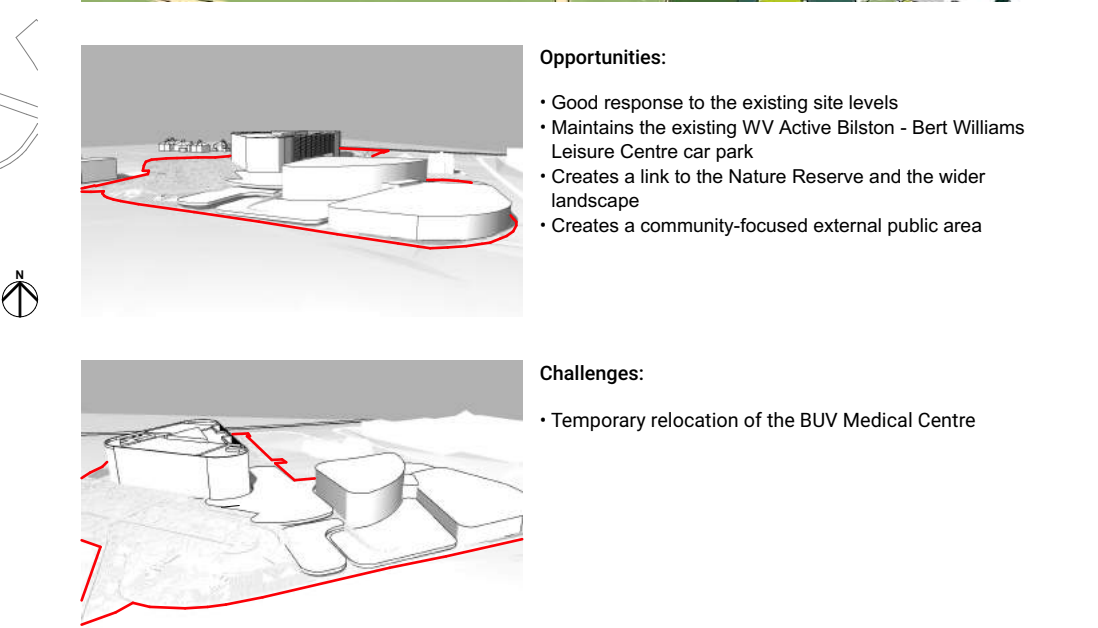
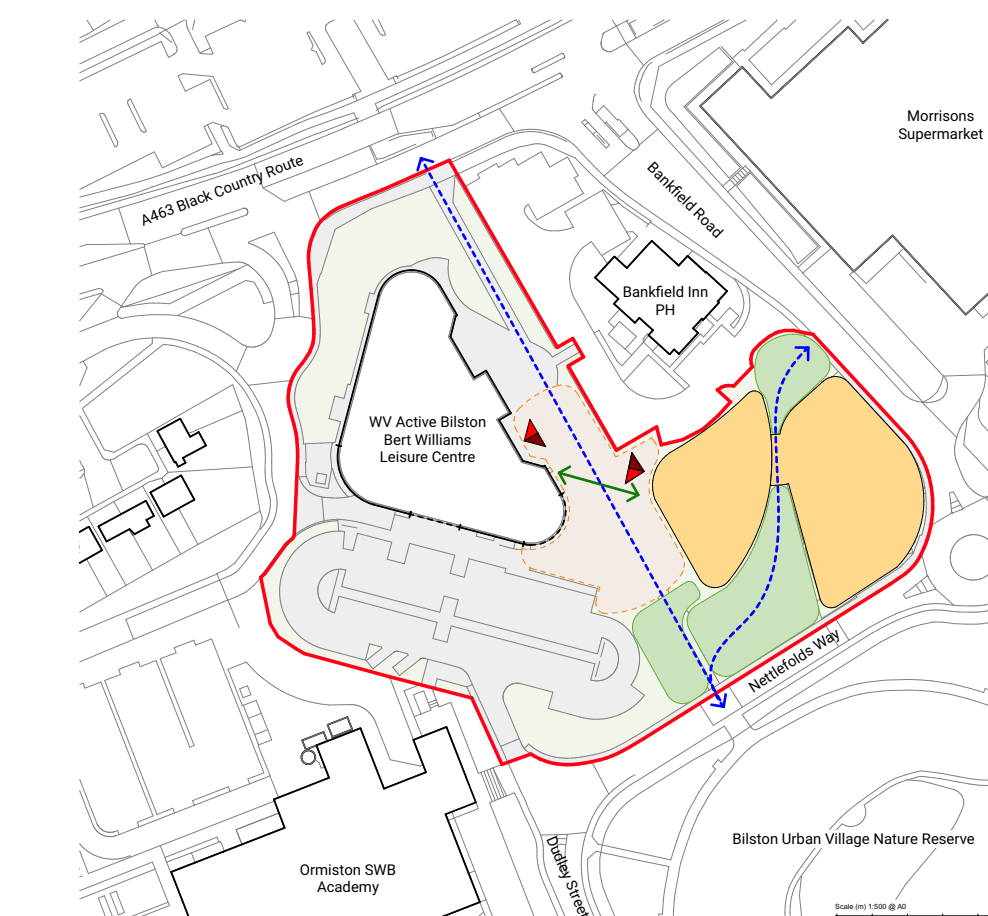
Bilston Health & Wellbeing Facility

Concept A: Two-Storey Extension



Bilston Health & Wellbeing Facility

Concept C: Stand-alone Buildings



Stakeholder and Community Feedback

The design concepts presented at the early spring Community Event explored a range of site opportunities and constraints, and presented design solutions to demonstrate what the site could potentially achieve.

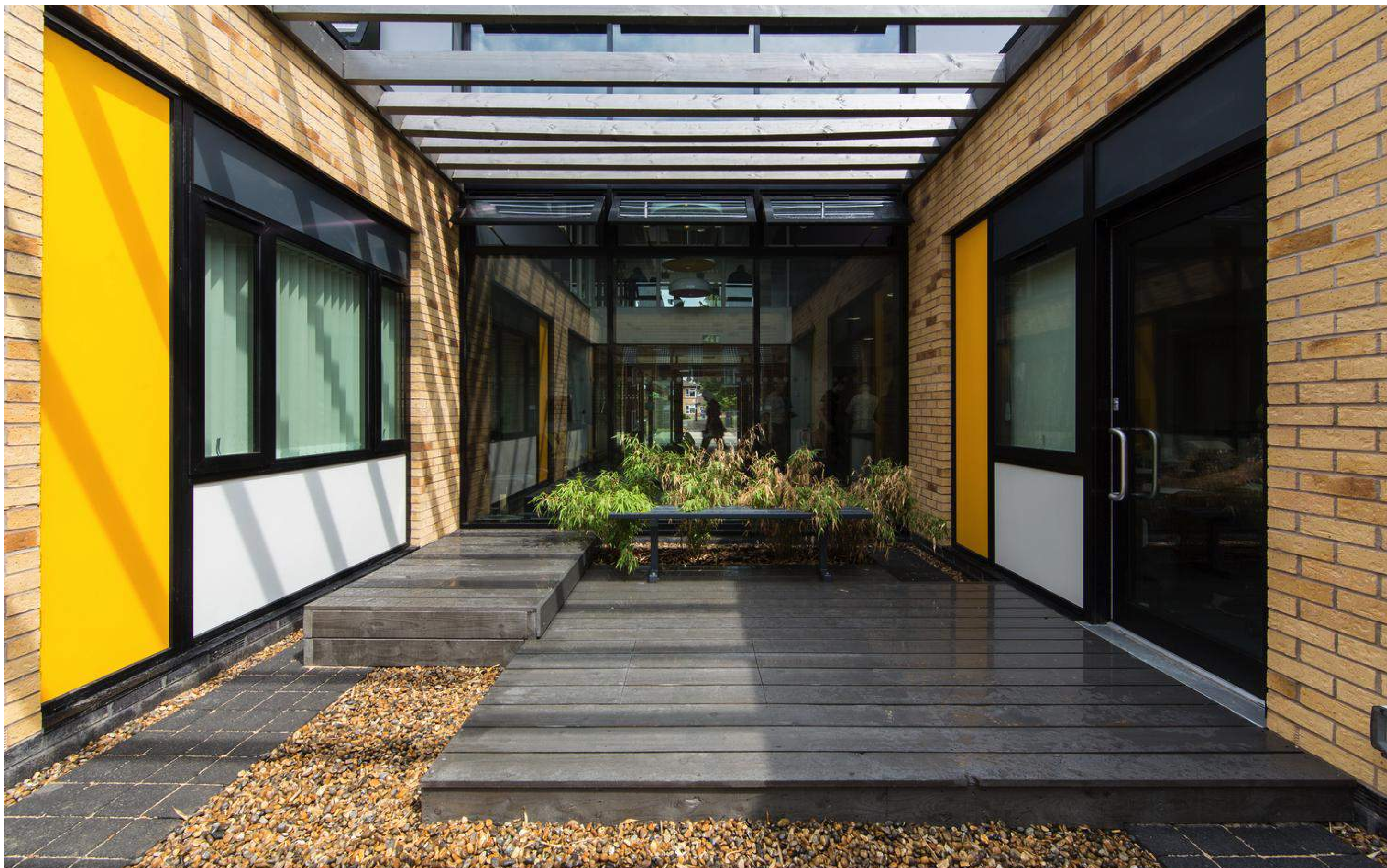
Thanks to the active participation of stakeholders, including the Bilston community, we were able to analyse and understand the key drivers that have informed the proposed design solution:

- A clear need for a Health & Wellbeing Facility in Bilston, offering a range of health and social care services
- The importance of an accessible and safe public space
- Appreciation of the value of the Bilston Urban Village Nature Reserve
- Importance of the Bert Williams Leisure Centre as a local landmark building and a leisure facility
- Support for promoting health, wellbeing, and sustainable lifestyles
- Adaptable spaces for fitness, social and wellbeing activities, classes and events
- Improvements to the existing Bert Williams Leisure Centre car park and the Bert Turner Boulevard

The presented design solution has been informed by stakeholder and community feedback, coupled with site surveys and assessments. The scheme is carefully integrated within the wider masterplan incorporating the Bert Turner Boulevard, Bert Williams Leisure Centre, Bilston Urban Village Medical Centre and the Nature Reserve, enhancing the landscape and strengthening existing connectivity within the wider Bilston community.

Bilston Health & Wellbeing Facility

Integrated Facilities



Integrated Facilities

The Bilston Health & Wellbeing Facility would transform primary and community care by integrating health, social care, wellbeing and leisure services for the benefit of the entire community. The aspiration for the project is to create a 'wellbeing campus' that empowers everyone to focus on healthier and more active lifestyles.

The development will comprise a new multi-agency building sited within an attractive landscaped public space.

The new facility will provide:

- Modern and flexible working environments
- Multi-functional spaces for a range of activities
- Daytime and out-of-hours services
- Space optimisation through the use of bookable suites of clinical, office, meeting rooms and community areas
- A community resource for individual, social, and family care
- Integrated primary and community health and social care services
- An efficient and sustainable environment

The images presented demonstrate examples of how modern design solutions could be used for the facility. Designed to the latest healthcare standards, the new Bilston Health & Wellbeing Facility will deliver a safe, modern and welcoming space for its service users and providers.

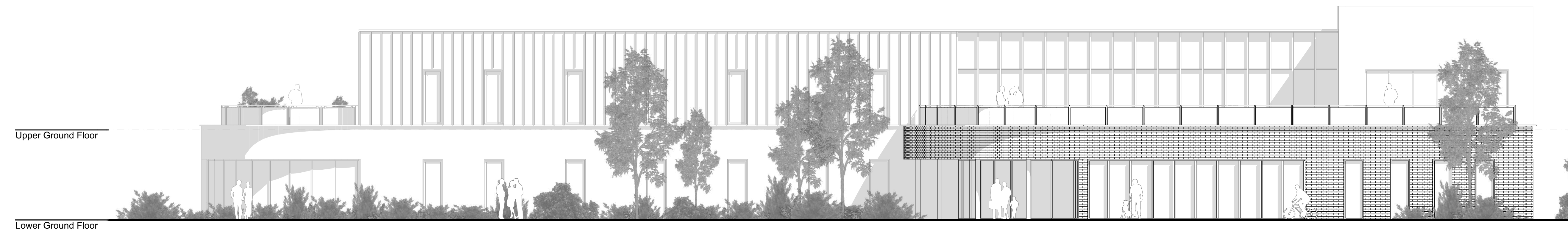
Bilston Health & Wellbeing Facility

Artistic Illustration

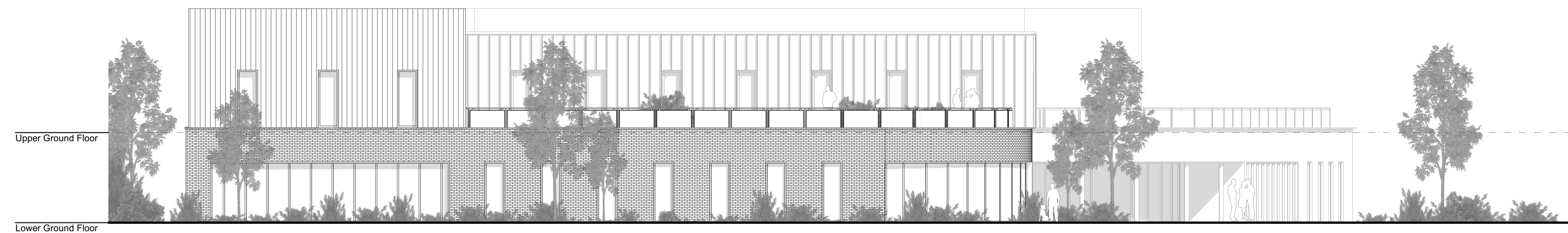


Bilston Health & Wellbeing Facility

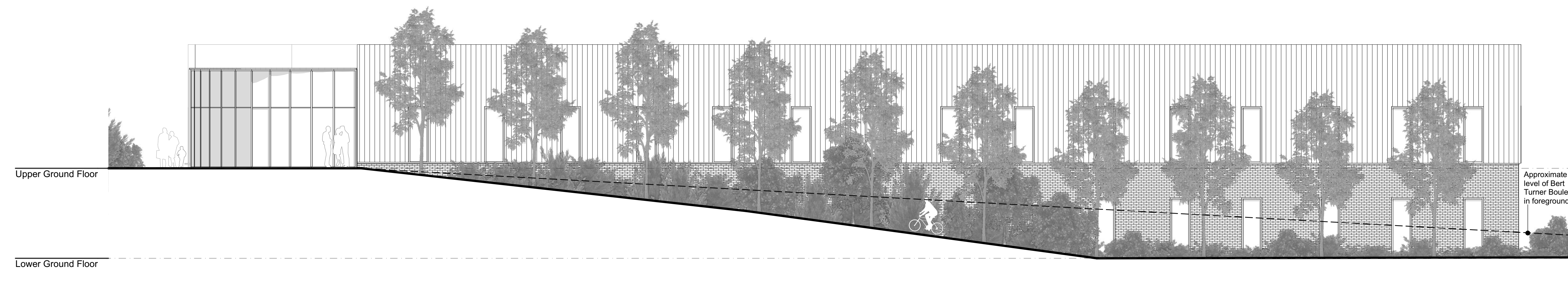
Proposed Elevations



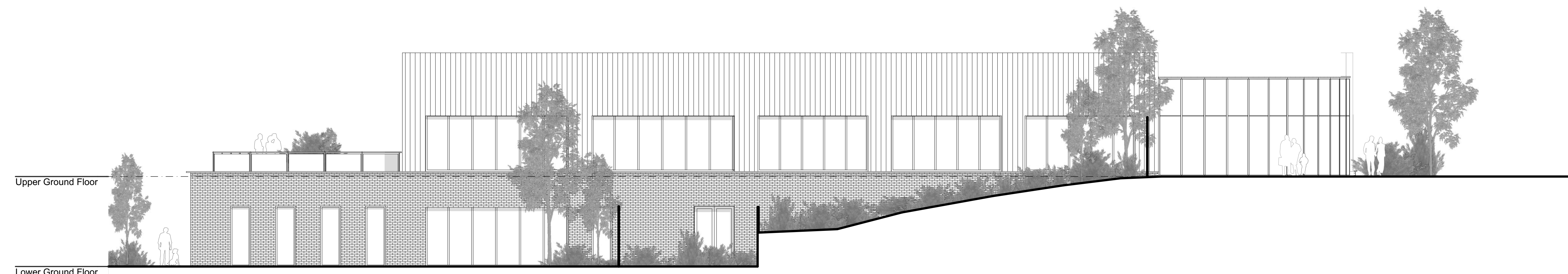
Elevation 1 - Bankfield Road (East)



Elevation 2 - Nettlefolds Way (South)

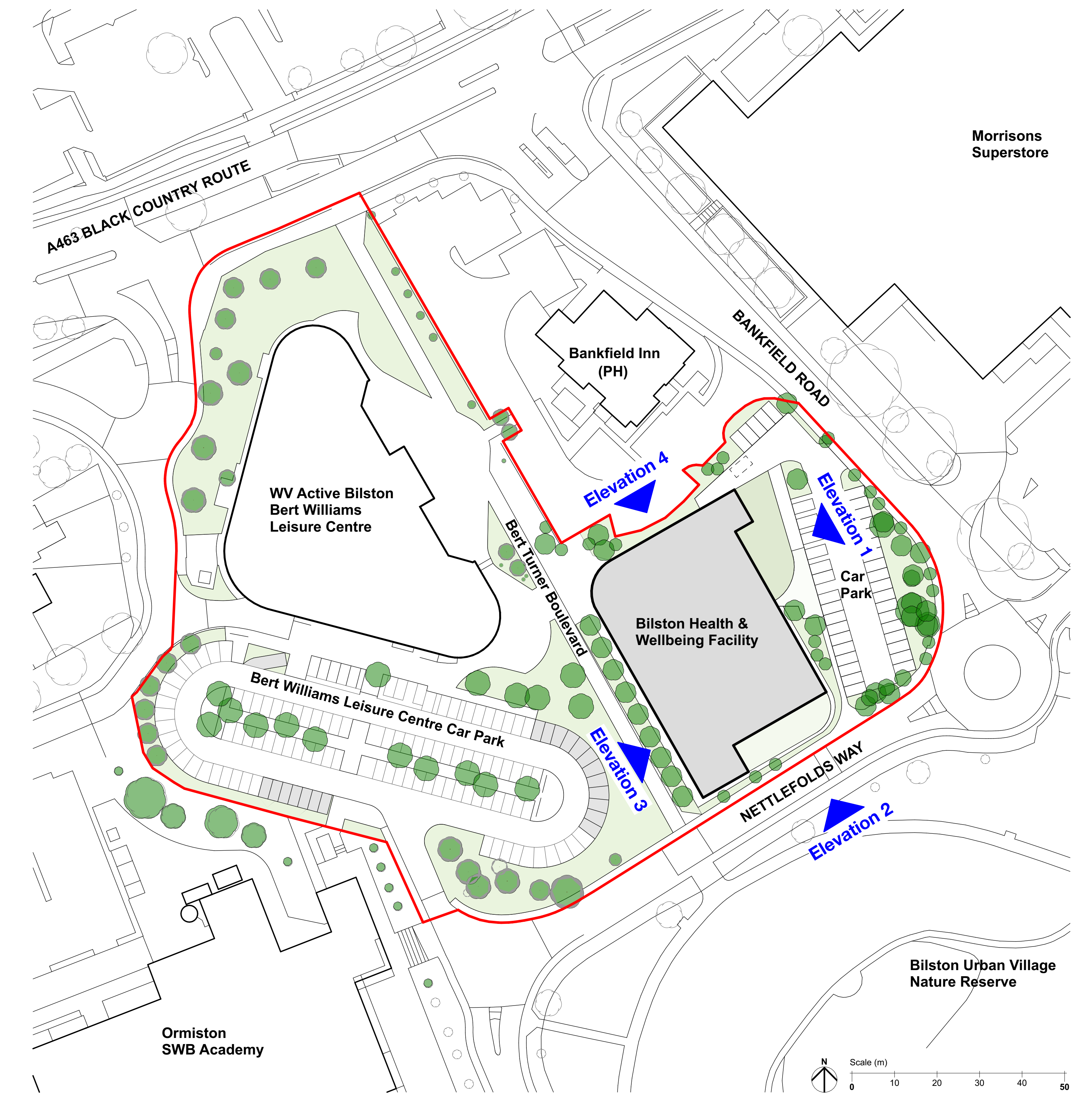


Elevation 3 - Bert Turner Boulevard (West)



Elevation 4 - Bankfield Inn Public House (North)

Scale (m) 1:100



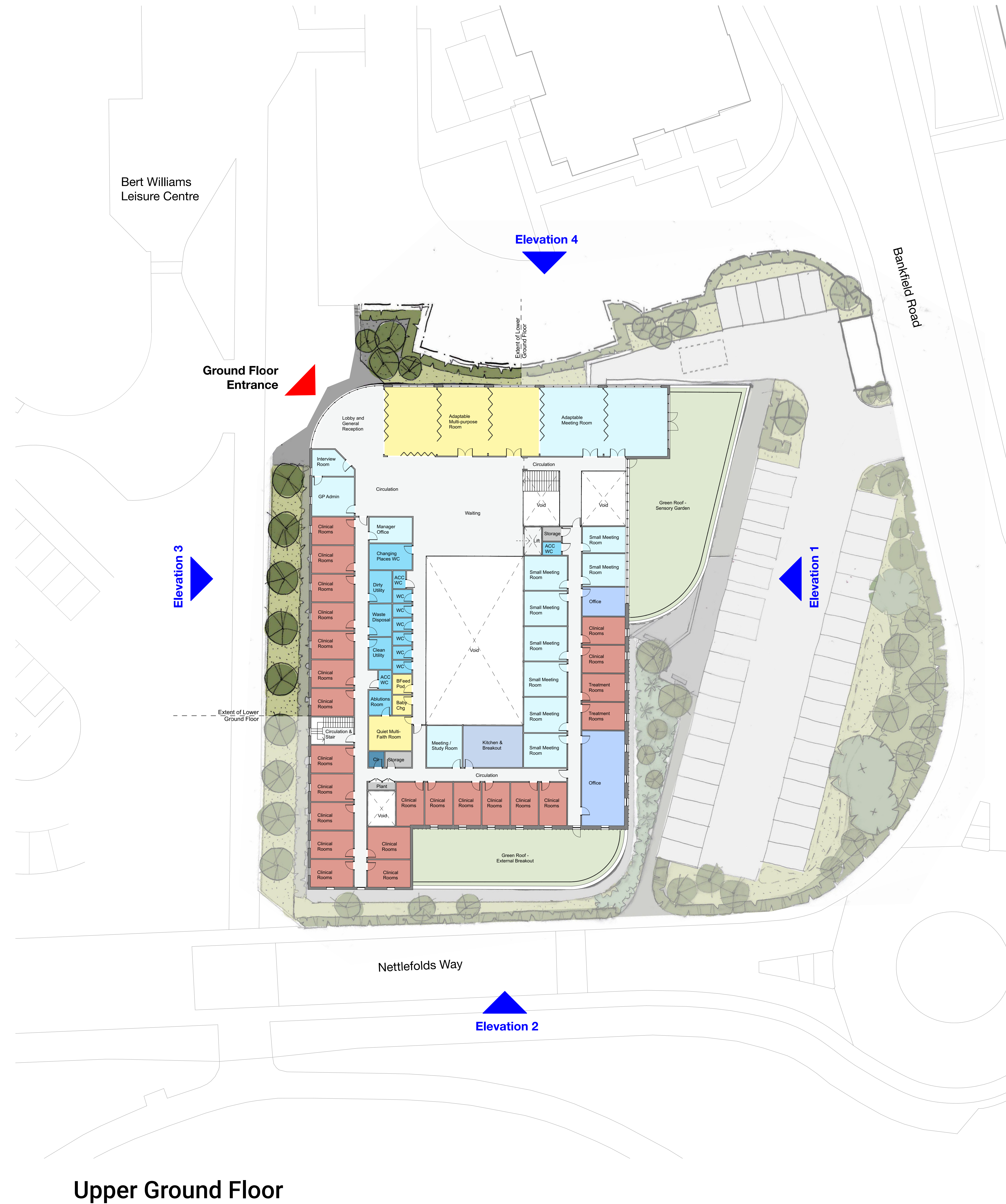
Key Considerations - Elevations:

- Integrating the design with the existing site levels
- Maximising daylight with careful consideration for user privacy
- Incorporating external design features that help create a vibrant presence
- Framing the dual scenic views of the Nature Reserve
- Using textures and materials, inspired by the surrounding area, to create depth and interest
- Keeping views from the Bert Williams Leisure Centre and Bankfield Inn unobstructed

Key Considerations - Site Masterplan:

- A sensory and physical link between the new Health & Wellbeing Facility and the existing Bert Williams Leisure Centre
- Building structure follows the existing site levels
- Accessibility and easy navigation within the building and the surrounding area
- Creating a safe and friendly public space
- Minimising the disturbance and impact to the neighbours and existing structures

Floor Plans



Key Considerations:

- Integrating primary and community health and social care services
- Creating a clear and accessible user journey
- Allowing for multi-functional and flexible use of spaces for a variety of events
- Maximising daylighting and welcoming openness
- Drawing design inspiration from the iconic Bert Williams Leisure Centre landmark and the existing site levels



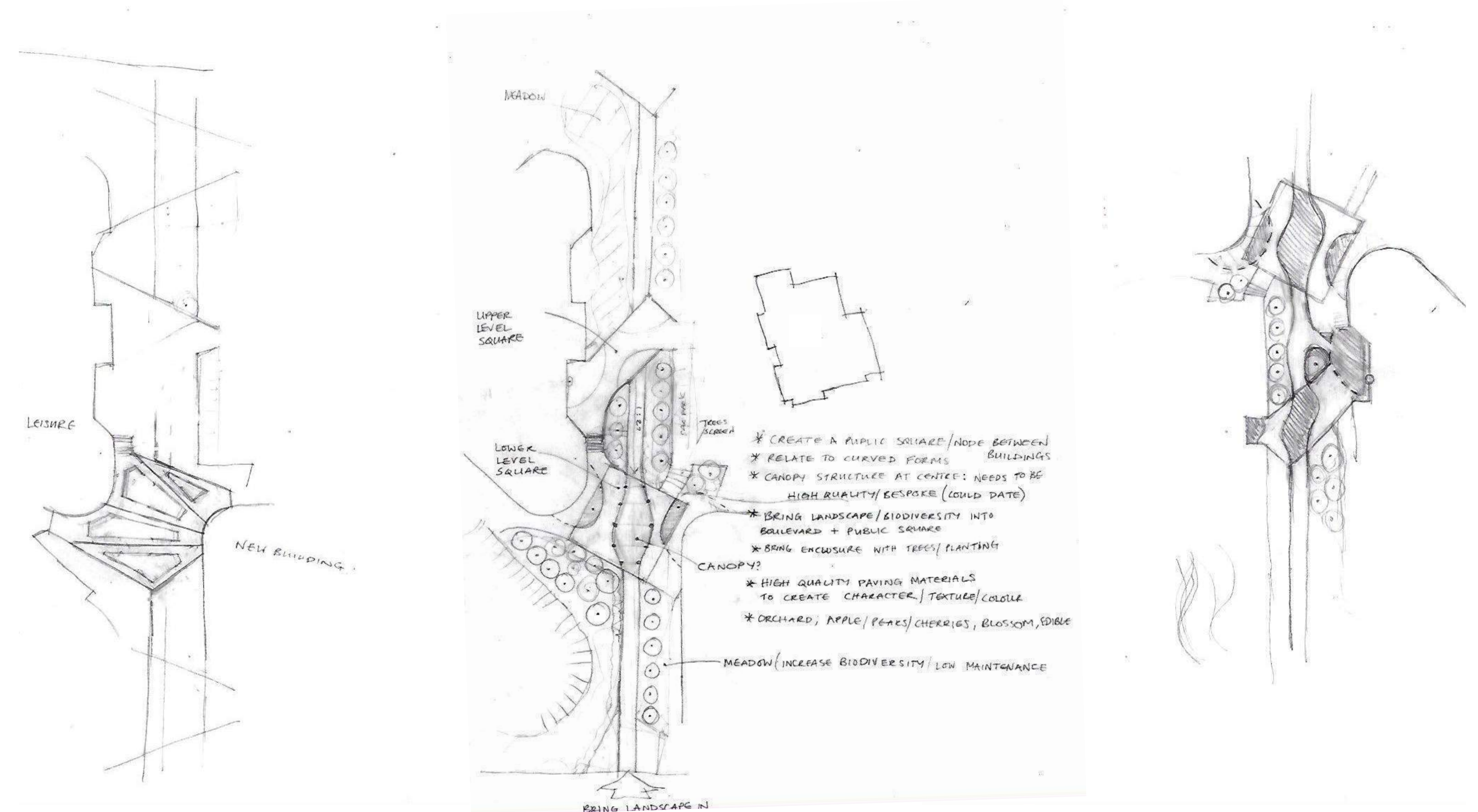
Bilston Health & Wellbeing Facility

Landscape Concept

Landscape Masterplan



Design Development Sketches



Public Realm and Site Masterplan

The proposed Masterplan enhances the established pedestrian connections from the north to the south. A revitalisation of the Bert Turner Boulevard, retention of existing mature trees, and introduction of wildflower meadows creates an extension to the Nature Reserve.

A visual and sensory link between the new Health & Wellbeing Facility and the Bert Williams Leisure Centre is bolstered with a new public plaza. This introduces a new focal point and heart space for the evolving wellbeing campus, and an opportunity for public events and social interaction.

The size and height of the proposed building respects the existing site levels, with the Lower Floor (car park entrance level) diminishing into the ground as the Bert Turner Boulevard rises from the south. The new building appears to step down the slope to the lowest car park level, settling into its surroundings. Further visual connectivity with the wider area is created through green roofs and a Rooftop Sensory Garden, with panoramic views into the Nature Reserve.

A comprehensive approach to the wider site masterplan increases parking provision to the existing Bert Williams Leisure Centre car park, introduces green planted buffer zones to soften the boundaries with surrounding roads, and improves accessibility to existing routes across the site.