

Future Generations: Our Climate Commitment

wolverhampton.gov.uk

CITY of
WOLVERHAMPTON
COUNCIL





Contents

| | |
|---------------------------------------|----|
| Foreword | 3 |
| Climate Change: The Facts | 4 |
| National risks | 5 |
| Sustainability in the city | 6 |
| Our Climate Emergency Declaration | 7 |
| Progress to date | 8 |
| Breakdown of council carbon footprint | 10 |
| Our commitments | 11 |

Foreword

Climate change endangers our planet, our nation and our city.

It's an important and growing priority for all Wulfrunians but especially our younger generations who are key to the future success of our city. They've told us that climate change is the single biggest issue for them. It's time our city listens, learns and acts.

That's why we've called our strategy 'Future Generations.' In it we set out how we will deliver our commitment to make the City of Wolverhampton Council carbon-neutral by 2028 and deliver upon the promises we made when we declared a climate emergency at Full Council in 2019.

We are also committed to leading a whole-city approach and to work with a wide range of partners across the city to safeguard the health, safety and well-being of our city and the future generations that will inherit it.



Tim Johnson
Chief Executive



Councillor Ian Brookfield
Leader of the Council

Climate Change: The Facts

The United Nations Framework Convention on Climate Change made the Paris Agreement in 2015 committing the global community to pursue efforts to limit the temperature increase to 1.5°C.

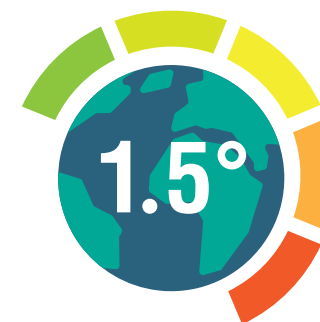
It warns that global warming of 2°C would increase risks to health, food security, water supply and economic growth.

Therefore, it recommends that 1.5°C is a realistic target for avoiding the worst extremes of Climate Change.

For more information on Climate Change [go here](#).

1.5° vs 2.0°

The difference between 1.5° and 2° seems slight on paper. However, the repercussions will be great:



| | If a warming of only 1.5° is kept there will be: | If warming continues to 2° the risks are: |
|-----------------------|---|---|
| Flood risk | 100% increase | 170% increase |
| Severe drought | 350 million urban residents exposed by 2100 | 410 million urban residents exposed by 2100 |
| Sea-levels | 46 million people impacted by sea-level rise of 48cm by 2100 | 49 million people impacted by sea-level rise of 56cm by 2100 |
| Oceans | Lower risks to marine biodiversity, ecosystems and their ecological functions and services | Increased risks to marine biodiversity, ecosystems and their ecological functions and services |
| Arctic Ice | Ice-free summers in the Arctic at least once every 100 years | Ice-free summers in the Arctic at least once every 10 years |

National risks

The wider world will suffer more from the impacts of Climate Change. However, it will have a great affect on the UK as well.

Predicted Impacts:



£130 billion of infrastructure is at risk of flood damage due to sea levels rising



'1 in a 100 year' floods will become more common and summer droughts will increase



Fuel, food and insurance **prices will go up**



Without investing in sustainability, Wolverhampton will not be a city in which our future generations can thrive.

We want our future city to have clean air, to be green and to be economically prosperous without harming our environment. Only by investing in sustainability can this goal be achieved.

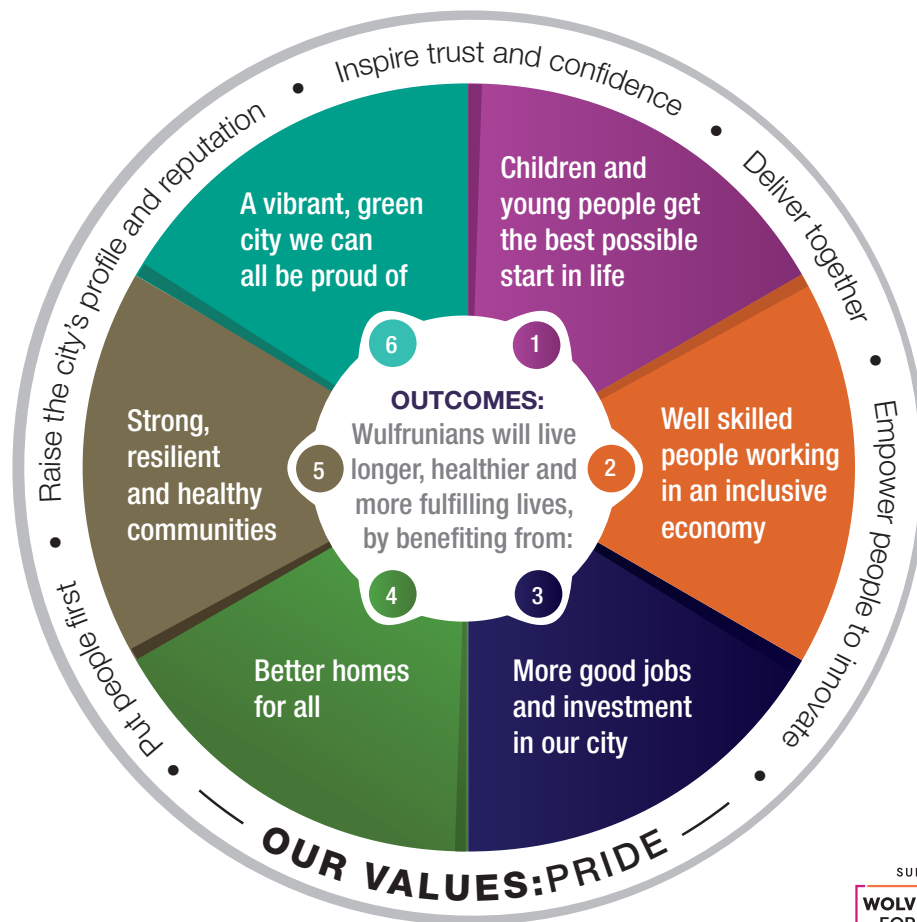
Sustainability in the city

One of our key priorities is to make Wolverhampton *“a vibrant, green city that we can all be proud of.”*

In order to achieve this, the council has committed to investing heavily in sustainability within the city making it an integral part of our work.

In 2013, the Sustainability Strategy and Implementation Plan was born. This sought to further embed sustainability across the council’s actions making considerable progress.

The council has addressed the challenge of Climate Change through our work over the years. There have been a series of strategies going back to the Local Agenda 21 Strategy in 1999. The latest was the Climate Local Wolverhampton Action Plan 2013-18.



Our Climate Emergency Declaration



As demonstrated, the council has made great efforts to improve sustainability within the city and to reduce its carbon footprint over the years. However, the council recognises that even greater action is necessary to ensure a thriving city.

So, in July 2019, City of Wolverhampton Council become the first local authority in the Black Country to declare a Climate Emergency. This declaration is showcased here.

Our Climate Emergency Declaration pledged to:

- Make all council activities net carbon zero by 2028.
- Ensure all strategic decisions and budgets are in line with shift to net carbon zero.
- Ensure robust governance is in place to embed and champion Climate Change across the council.
- Appoint a Member Champion for Climate Change.
- Work with partners across the city and region to work towards a net carbon zero future.
- Request a review of the investment strategy within the West Midlands Pension Fund to give due consideration to Climate
- Lobby national and regional powers to secure greater resources for tackling Climate Change
- Hold a Citizens Assembly to direct work around Climate Change, and proactively include young people in co-producing strategy and future of the city.

*Net carbon zero is where emissions are reduced as far as possible with any remaining emissions off-set in order to deliver a net result of zero emissions.

Progress to date

The work that has been undertaken within the council has led to good progress in developing a more sustainable, climate friendly city.

Achievements include:



2012-13

Planning policies put in place to ensure **renewable generation built into new housing developments**

2011

Solar panels installed on the Civic Centre

2012

6 Mega Watts of Solar Panels built into the i54 plant

2015

2012

First of three Passivhaus (carbon neutral) schools built in the city



Lowest absolute emissions of CO2
among Black Country Local Authorities
2018-19
(WMCA Sustainability)

24 km of new or improved
cycle path delivered

2017



2019

Climate change actions
embedded into all council
leadership teams



All council buildings and street
lighting within the city powered by
renewable electricity

2019

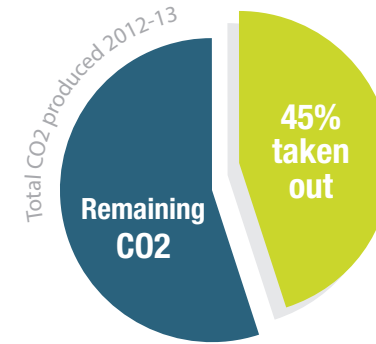


2019

Member Champion
for Climate Change appointed



The council's carbon footprint
has reduced by 45%
between 2012-13 and 2018-19



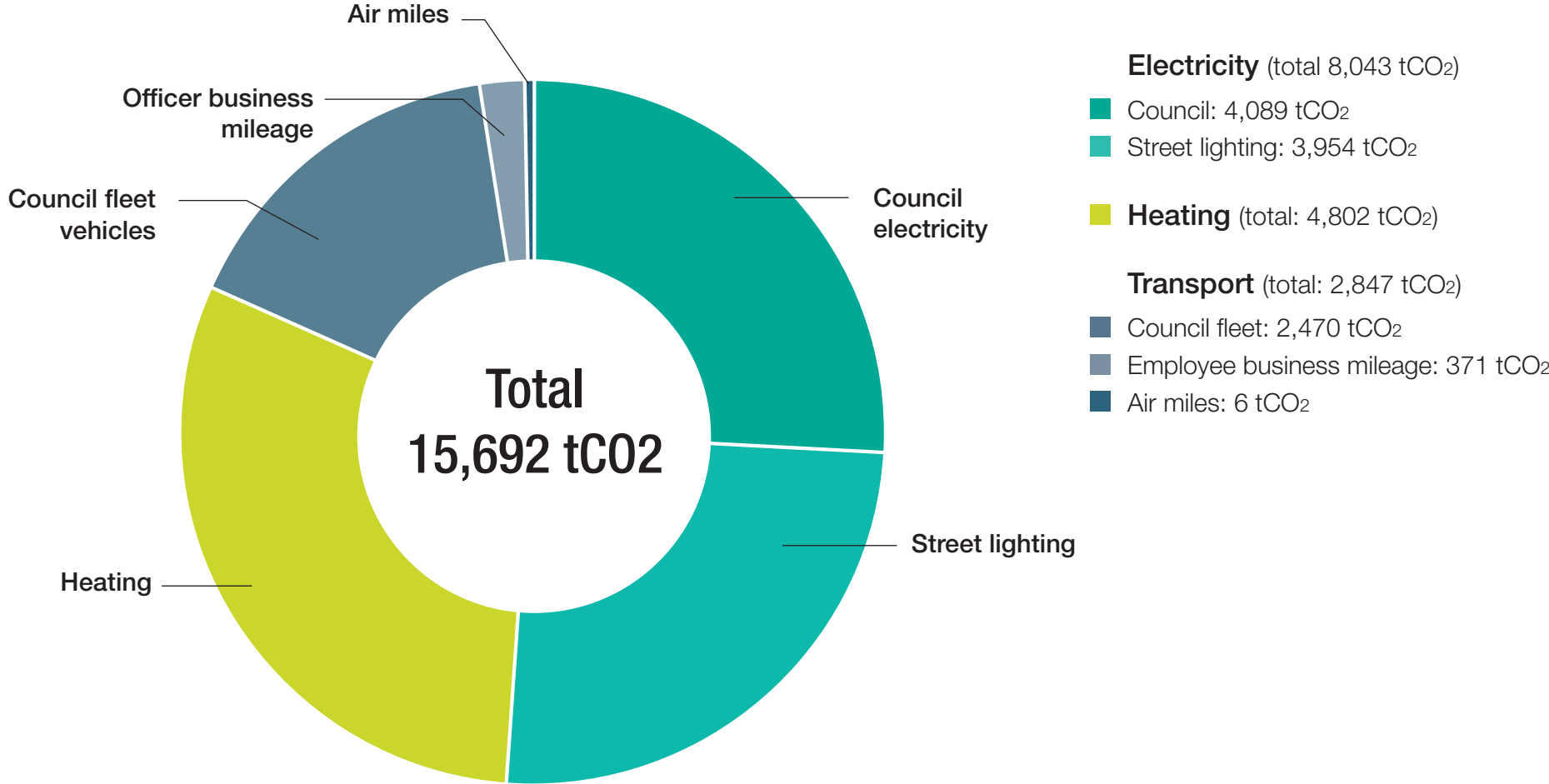
2019

6 electric vehicle charging
points have been installed with
more planned early 2020



2018-19

Breakdown of the council's carbon footprint



Raising environmental awareness

- Deliver public information campaign about risks of Climate Change and solutions to mitigate its affects
- Encourage citizens to make Climate Change pledges
- Deliver a Citizens Assembly on Climate Change

Reducing the council's carbon emissions

- Making the council's transport fleet ultra-low emission by 2028
- Council to purchase only renewable electricity for its estate
- Install SMART Technology to maximise energy efficiency of council buildings

Increasing sustainability within the council

- Improve transparency around recycling in the city
- Continue ensuring that all future corporate regeneration schemes are evidently sustainable
- Reduce printing in the council

Our commitments



To ensure future generations of Wolverunians *live longer, healthier lives* we will take immediate action, altering the way we generate energy, care for the environment and deliver services.

Improving support towards carbon reduction in the city

- Deliver Black Country Ultra-Low Emission Vehicle Programme
- Support delivery of renewable energy facilities within the city
- Request review of the West Midlands Pension Fund's investments
- Further develop existing infrastructure to support energy shift


Improving support for sustainability in the city

- Deliver programme to encourage sustainability in our city's schools
- Deliver SMART City initiatives that enable more sustainable practices
- Deliver scheme that encourages business to eliminate single-use plastics

Increasing carbon capture

- Implement the Tree and Woodland Strategy
- Develop tree planting programme within the city

wolverhampton.gov.uk 01902 551155

  WolverhamptonToday  Wolverhampton_Today  @WolvesCouncil

City of Wolverhampton Council, Civic Centre, St. Peter's Square,
Wolverhampton WV1 1SH