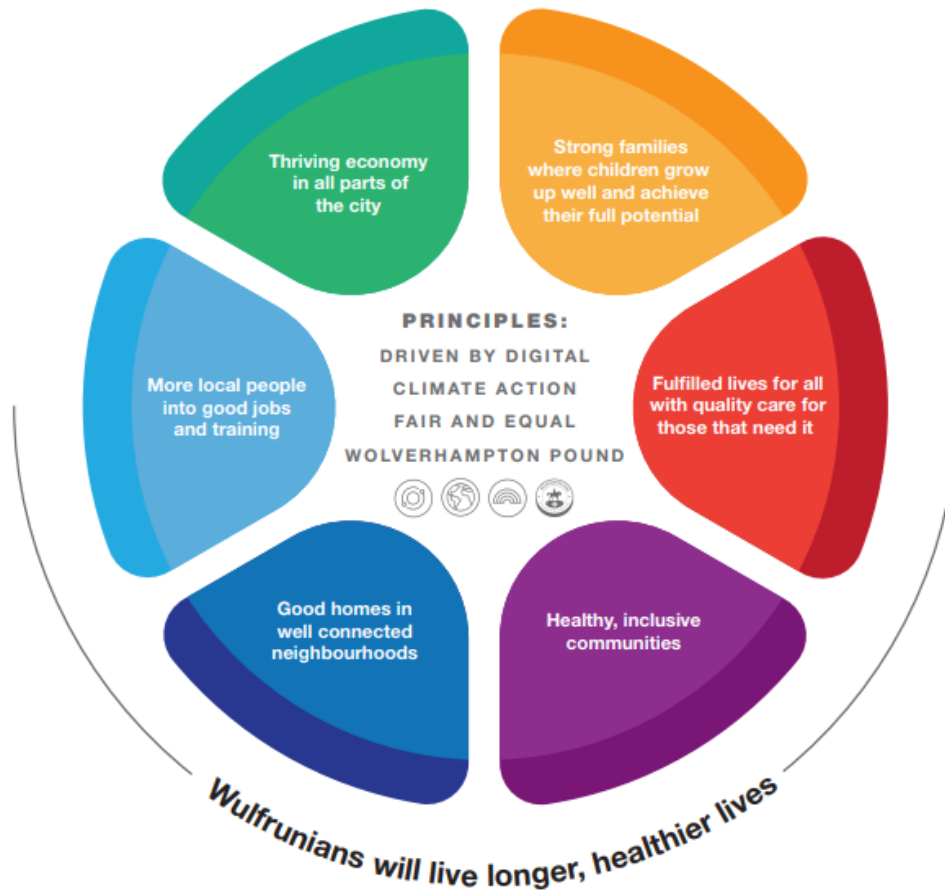
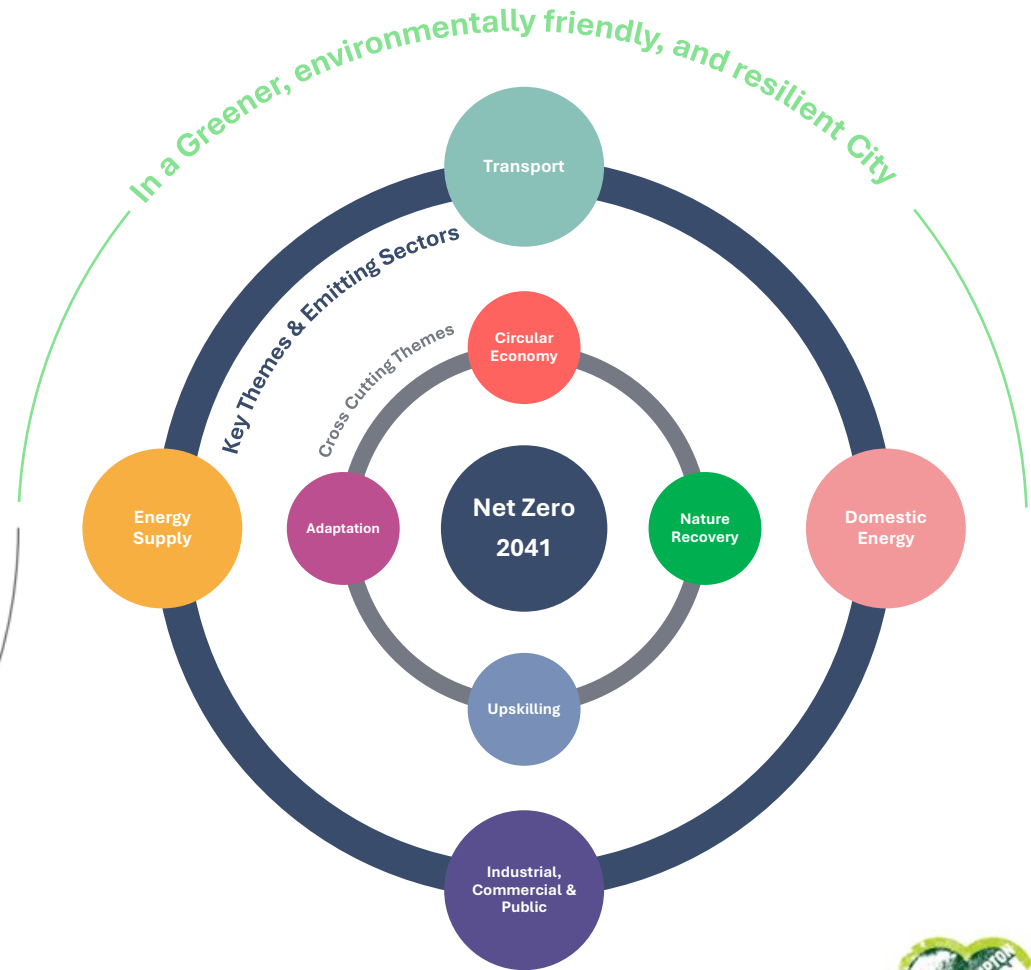


OUR CITY: OUR PLAN

Our Net Zero City Strategy is supplement to Our City: Our Plan



OUR NET ZERO CITY



Our Net Zero City Strategy is focussed on the following aims:

- 1 Residents & Businesses are well informed and empowered to take climate action
- 2 Wolverhampton runs on smart local low-carbon heat and power
- 3 Wulfrunians enjoy warm and energy-efficient homes in Net Zero Neighbourhoods
- 4 Sustainable businesses, jobs and skills to create a green and circular economy
- 5 Equal access to sustainable transport across the City
- 6 Wulfrunians enjoy equal access to a nature-friendly and climate-resilient city



By achieving Our Net Zero City aims, we will deliver the following outcomes:

Our Net Zero City Outcomes

1 Residents & Businesses are well informed and empowered to take climate action

- Greater awareness of climate change and its impacts to drive behaviour change
- Support for communities to engage in climate action
- Improving business & supply chain collaboration to improve corporate responsibility

2 Wolverhampton runs on smart local low carbon heat and power

- Lower energy bills for residents and protection from future energy crises
- Lower bills for resilient businesses to thrive in the City
- Cost effective transition to low carbon heat
- Boosting renewable energy jobs and skills in the City to drive local economic growth

3 Wulfrunians enjoy warm and energy efficient homes in Net Zero Neighbourhoods

- Helping residents reduce their energy demand and fuel bills
- Make homes warmer to reducing fuel poverty and improve health and wellbeing of vulnerable people
- Building new homes to the highest energy efficiency standards
- More support for deprived communities through neighbourhood regeneration
- Growing retrofit jobs and skills

4 Sustainable businesses, jobs and skills to create a green and circular economy

- Supporting businesses with energy efficiency to reduce energy costs and build resilience
- Driving investment in the low carbon economy by supporting economic regeneration
- Enabling the circular economy by reducing waste and improving recycling

5 Equal access to sustainable transport across the City

- Tackling air pollution through cleaner transport modes to improve health and wellbeing of residents
- Reducing congestion and traffic through shift to sustainable travel
- Equal access to cleaner travel choices across the city
- Boosting skilled low carbon skills and Jobs

6 Wulfrunians enjoy equal access to a nature friendly and climate resilient city

- More trees, greenery across our city to increase biodiversity and protection from extreme weather
- Improving access to green spaces for deprived areas
- Improved quality and spread of green space to improve health and wellbeing
- Enabling community action

Our Net Zero City Principles



CLIMATE ACTION

Resilience



DRIVEN BY DIGITAL

Collaboration



(FAIR AND EQUAL

Engagement



WOLVERHAMPTON POUND

Distributed Leadership



We will achieve the aims and outcomes of Our Net Zero City by delivering the following actions:

Our Net Zero City Aims	No	Priority Action	Our City Outcomes					
			1	2	3	4	5	6
1. Residents & Businesses are well informed and empowered to take climate action	1.1	Establish forum for businesses to work together to reduce emissions					✓	✓
	1.2	Deliver a city-wide awareness and engagement programme for low-carbon heating solutions				✓	✓	✓
	1.3	In partnership with stakeholders, provide access to information and training on achieving Net Zero.				✓	✓	✓
2. Wolverhampton runs on smart local low carbon heat and power	2.1	Identify opportunities for power generation and storage to serve local communities	✓			✓	✓	✓
	2.2	Make solar panels available at a lower cost throughout the city	✓	✓		✓	✓	✓
	2.3	Create a city-wide heating network				✓	✓	✓
3. Wulfrunians enjoy warm and energy efficient homes in Net Zero Neighbourhoods	3.1	Devise a retrofit programme across all homes to increase energy efficiency	✓	✓		✓	✓	
	3.2	Make sure every new development across the city meets the highest standards of energy efficiency and sustainability	✓	✓		✓		✓
	3.3	Develop a fund to support community-led initiatives to achieving Net Zero			✓	✓		✓
4. Sustainable businesses, jobs and skills to create a green and circular economy	4.1	Create local centres for last-mile deliveries (delivery hubs)					✓	✓
	4.2	Continue to support energy efficiency and retrofit in businesses				✓	✓	✓
	4.3	Increase access to sharing or re-use hubs across the city						✓
	4.3	Ensure council promotes sustainable practices through its supply chain (e.g. circular economy)						✓
	4.5	Develop a plan for growing green skills and jobs in the city	✓			✓	✓	✓
5. Equal access to sustainable transport across the City	5.1	Increase number of public electric vehicle chargepoints	✓			✓	✓	✓
	5.2	Develop a plan for sustainable parking across the city			✓	✓		✓
	5.3	Improve walking and cycling routes in the city		✓	✓	✓		
	5.4	Establish incentives for using sustainable modes of transport		✓	✓	✓		✓
6. Wulfrunians enjoy equal access to a nature friendly and climate resilient city	6.1	Improve quality of open green spaces and natural waterways with our partners			✓	✓		✓
	6.2	Increase wildlife/biodiversity and plant coverage underused public and private-sector land			✓	✓		✓



1

Residents & Businesses are well informed and empowered to take climate action



To align with this aim, we plan to:

Deliver these priority Actions:

1.1 Establish forum for businesses to work together to reduce emissions

1.2 Deliver a city-wide awareness and engagement programme for low-carbon heating solutions

1.3 In partnership with stakeholders, provide access to information and training on achieving Net Zero

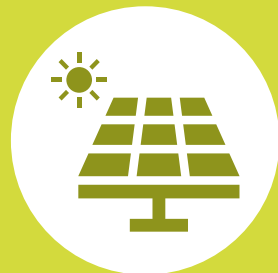
To Achieve the below Outcomes:

- Greater awareness of climate change and its impacts to drive behaviour change
- Support for communities to engage in climate action
- Improving business & supply chain collaboration to improve corporate responsibility



2

Wolverhampton runs on smart local low carbon heat and power



To align with this aim, we plan to:

Deliver these priority Actions:

2.1 Identify opportunities for power generation and storage to serve local communities

2.2 Make solar panels available at a lower cost throughout the city

2.3 Create a city-wide heating network

To Achieve the below Outcomes:

- Lower energy bills for residents and protection from future energy crises
- Lower bills for resilient businesses to thrive in the City
- Cost effective transition to low carbon heating
- Boosting renewable energy jobs and skills in the City to drive local economic growth



3

Wulfrunians enjoy warm and energy efficient homes in net zero neighbourhoods



To align with this aim, we plan to:

Deliver these priority Actions:

3.1 Devise a retrofit programme across all homes to increase energy efficiency

3.2 Make sure every new development across the city meets the highest standards of energy efficiency and sustainability

3.3 Develop a fund to support community-led initiatives to achieving Net Zero

To Achieve the below Outcomes:

- Helping residents reduce their energy demand and fuel bills
- Make homes warmer to reducing fuel poverty and improve health and wellbeing of vulnerable people
- Building new homes to the highest energy efficiency standards
- More support for deprived communities through neighbourhood regeneration
- Growing retrofit jobs and skills



4

Sustainable business, jobs and skills for a green and circular economy



To align with this aim, we plan to:

Deliver these priority Actions:	To Achieve the below Outcomes:
4.1 Create local centres for last-mile deliveries (delivery hubs)	<ul style="list-style-type: none">• Supporting businesses with energy efficiency to reduce energy costs and build resilience• Driving investment in the low carbon economy by supporting economic regeneration• Enabling the circular economy by reducing waste and improving recycling• Enhancing social value across the City e.g. Wolverhampton £
4.2 Continue to support energy efficiency and retrofit in businesses	
4.3 Increase access to sharing or re-use hubs across the city.	
4.4 Ensure council promotes sustainable practices through its supply chain (e.g. circular economy)	
4.5 Make sure every new development across the city meets the highest standards of energy efficiency and sustainability	
4.6 Develop a plan for growing green skills and jobs in the city	



5

Equal access to sustainable transport across the City



To align with this aim, we plan to:

Deliver these priority Actions:

5.1 Increase the number of public electric vehicle chargepoints

5.2 Develop a plan for sustainable parking

5.3 Improve walking and cycling routes in the city

5.4 Establish incentives for using sustainable modes of transport

To Achieve the below Outcomes:

- Tackling air pollution through cleaner transport modes to improve health and wellbeing of residents
- Reducing congestion and traffic through shift to sustainable travel
- Equal access to cleaner travel choices across the city
- Boosting skilled low carbon skills and Jobs



6

Wulfrunians enjoy equal access to a nature friendly and climate resilient city



To align with this aim, we plan to:

Deliver these priority Actions:

6.1 Improve quality of open green spaces and natural waterways with our partners

6.2 Increase wildlife/biodiversity and plant coverage underused public and private-sector land

To Achieve the below Outcomes:

- More trees, greenery across our city to increase biodiversity and protection from extreme weather
- Improving access to green spaces for deprived areas
- Improved quality and spread of green space to improve health and wellbeing
- Enabling community action

