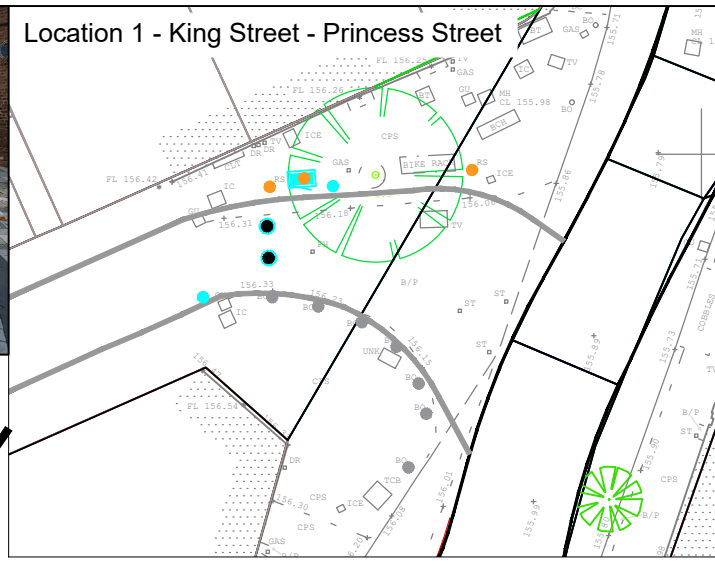


Permitted Purposes:
 Bullion/Security collections
 Royal Mail vehicles (collection from Post Boxes Only)
 Emergency Maintenance (in the interests of Public Safety)
 Emergency Service Vehicles where emergency access is required
 Utility works
 Highway Maintenance/works
 Planned works (where works cannot be arranged outside of restricted hours and a permit has been issued)

Not Permitted:
 General or scheduled maintenance that can be arranged outside of restricted hours
 Deliveries/Loading
 Taxis / Private Hire
 General Public
 Disabled Parking (except to bays in Bilston Street)
 Cyclists (except Princess Street)
 E-Scooters

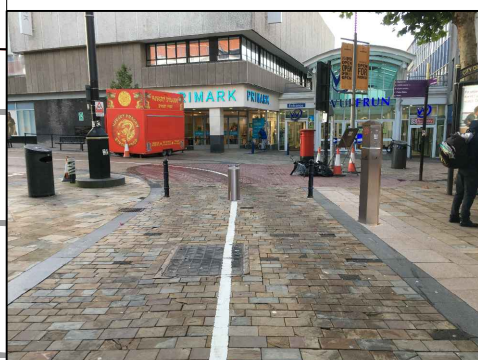
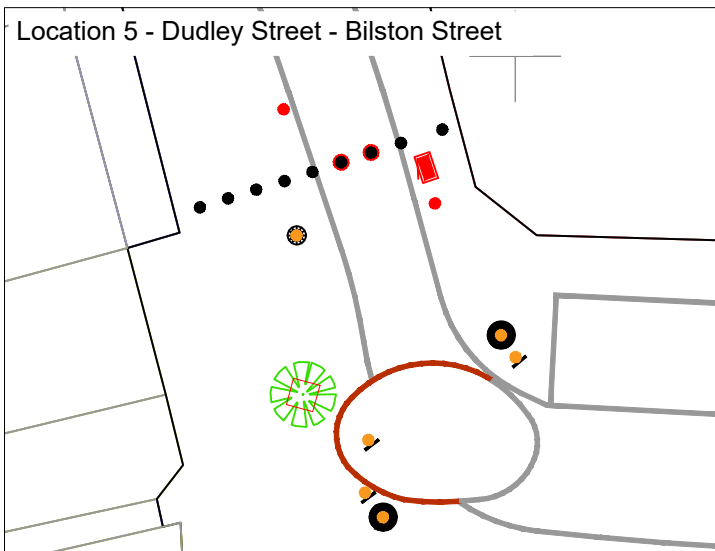
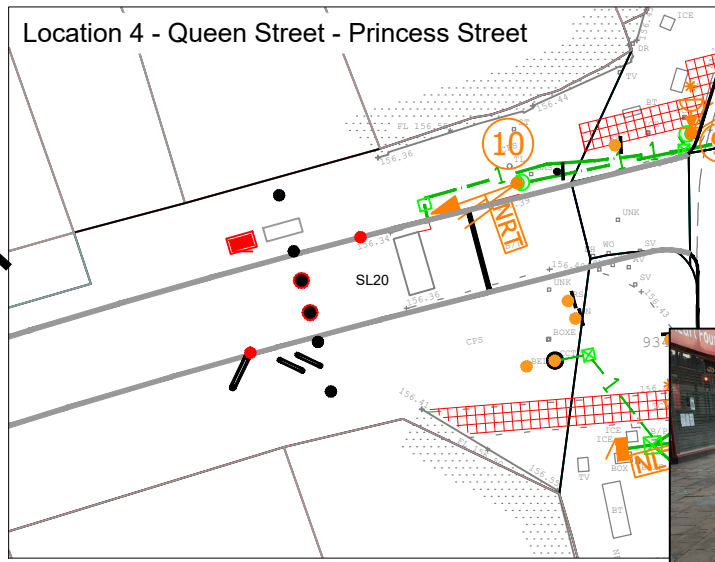
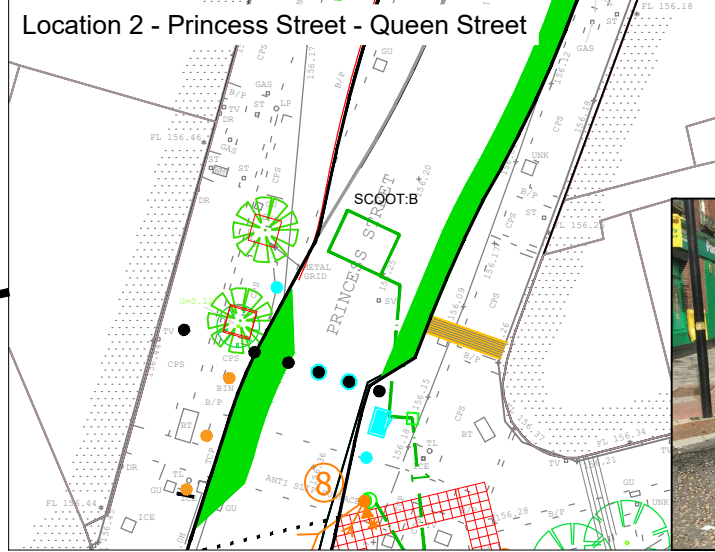
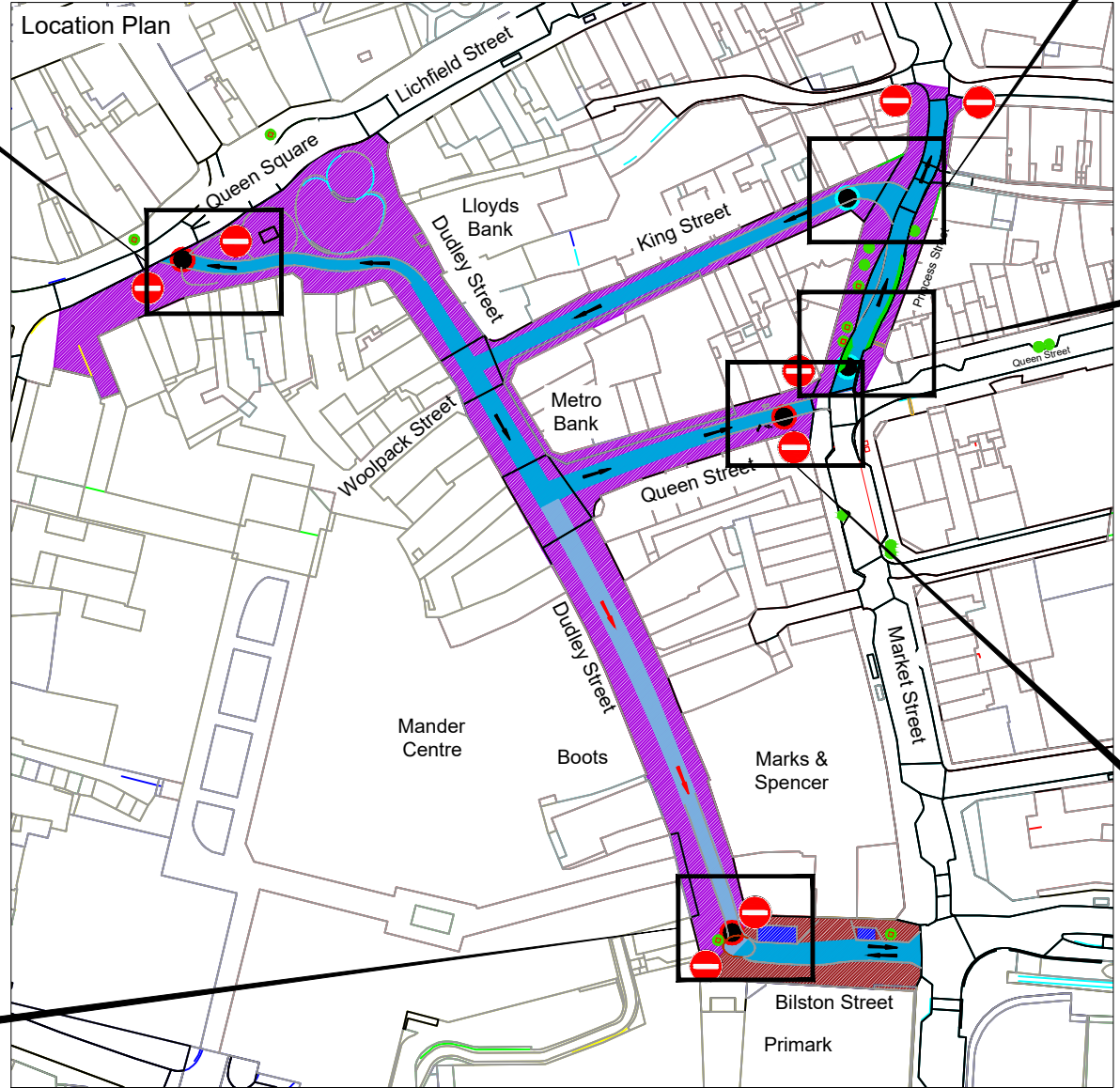


Key - Location Plan - TRO Detail

Proposed Pedestrian Zone
 No Waiting at any Time /
 No loading 8:30am to 5pm & 10pm to 6am
 Existing Waiting & Loading Restrictions to be Revoked.

Proposed Pedestrian Zone
 No Waiting at any Time /
 No loading 8:30am to 5pm & 10pm to 6am
 Retained access to Disabled Parking and M&S Loading Bay Only

Existing Disabled Parking Bays



Key - Rising Bollard Detail

- Rising Bollard Controller
- Rising Bollard
- Access Control and Status Indicator
- Proposed New Fixed Bollard
- Existing Bollard
- Existing Street Furniture

Photo visualisations are for consultation purposes only. The number and exact locations of bollards will be determined during detailed design.

Key - Location Plan - TRO Detail

- Direction of Traffic Flow
- Changed Direction of Traffic Flow
- Access Control Rise & Fall Bollard
- Egress Control Rise & Fall Bollard
- Extent of Carrageway within Pedestrian Zone
- Extent of Carrageway with changed direction of flow within Pedestrian Zone
- No Entry

project							Towns Fund Accelerator Project						
subject							City Centre Pedestrian Access Consultation Plan						
scales	date	drawn by	checked by	approved by	dwg no								
NTS	05/10/20	SKS	JC	JC	TFAP/SS/003CON								
City of Wolverhampton Council Civic Centre, St Peter's Square, Wolverhampton, WV1 1SL					CITY OF WOLVERHAMPTON COUNCIL								